



PRODUCT NEWS

2014 February

ESP 12 with 4 flows now available

2013 August

We introduced the new MID-6 model at 230V at 60Hz

2013 July

New pump type DBS now available characterized by compact dimensions equipped with an energy saving motor.

2012 October

The SP & RIO series at 60Hz has been updated with a new motor that offers the possibility to use double frequency (see pag. 11,12,13 & 14).

2012 August

The new Agitator Pump DBS, is characterized by low energy consumption. It's designed to guarantee the full protection of the lower bearing, which not only has been raised 10mm from the base of the pump, but is also protected by a PATENDED ventilation system, projected in a sort of thermal cutting chamber (see pag. 5). DBS series will be available for sale from week 9 of 2013.

2011 November

New range RIO & MID pumps available at 60Hz with performance from 5 to 24 meters.

2010 October

After long testing, now all pumps STR & STA are equipped with a new turbine (PATENDED) characterised by larger expansion room increased by +30% allowing the outflow of any dirt in the water. This component can also be easily removed in order to clean the turbine or the hydraulic chamber where it is fitted.

2009 December

Together with the ESP-7 with 3 water flow version (now ESP-7.3), from December the new version with 2 flows (ESP-7.2) is available.

2009 November

The CLT is a new Agitator-Pump that has been added to complete the item range.

2009 October

In October ESP Agitator-Pump was introduced. It offers the possibility to connect 3 water circuits in one single pump.

2009 September

Thanks to new structure, the new ST series offers more protection from water and its air cooling system has been increased by +20%, this allows the bearings and motor to have a longer life expectancy.

REVISED CATALOGUE

REV 09/2014

- Correction on MID: the performance was indicated from 9 to 24m instead of 5 to 6m
- Correction on ST: Compact Version has been removed.

REV 01/2013 (24 July)

ST (former page 4, now page 6): dimension (see letter "A") of motor body has been specified for version with plate 108x129mm (compact version)

REV 03/2012 (6 December)

The SP-12 at 115V 50/60Hz has been replaced by version 115V 60Hz. The version 115V at 50Hz is available on specific demand

REV 02/2012 (14 November)

- Correction on RIO-6: the motor dimension was indicated as 82mm instead than 72mm (see letter "A")
- Correction on RIO-7 & RIO-11 at 50Hz: the motor dimension was indicated as 97mm instead than 82mm (see letter "A")
- Correction on RIO-9 at 60Hz: substitution with correct graphic performances

REV 01/2012 (27 October)

Found a mistake on ESP graphic

- Pag. 1 Agitator-Pump **CLT** series
- Economic pump
- Performance up to 2m
- Pag. 2 Agitator-Pump **ECO** series
- Economic pump. IP 55 protection.
- Performance from 4 to 6m
- Pag. 3 Agitator-Pump **MID** series
- Economic pump
- Performance from 6,5 to 8m
- Pag. 4 Agitator-Pump **RIO** series
- Compact size and IP 54 protection.
- Performance from 6 to 18m
- Pag. 5 Agitator-Pump **DBS** series **NEW**
- Energy saving 14%
- Performance from 6 to 7m
- Pag. 6 Agitator-Pump **ST** series
- High reliability
- Performance from 6 to 23m
- Pag. 7 Agitator-Pump **PKS** series
- Great agitation capacity (4 blades)
- Performance from 7 to 12m
- Pag. 8 Agitator-Pump **NRG** series
- Specific for GLYCOL solution use
- Performance from 12 to 23m
- Pag. 9 Agitator-Pump **ESP** series
- Characterized by multy water flow
- Performance from 7m to 12m

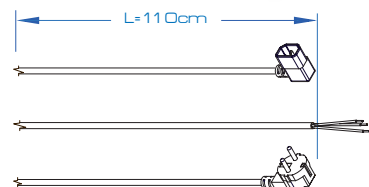
From 115 to 230V at 50/60Hz WORLD

- Pag. 10 Agitator-Pump **MID**
- Performance from 5 to 6m
- Pag. 11 Agitator-Pump **RIO** series 115V 50/60Hz
- Performance from 8 to 12m
- Pag. 12 Agitator-Pump **RIO** series 220V 60Hz
- Performance from 8 to 11m
- Pag. 13 Agitator-Pump **SP** series 115V 50/60Hz
- Performance from 6 to 25m
- Pag. 14 Agitator-Pump **SP** series 220V 60Hz
- Performance from 6 to 25m



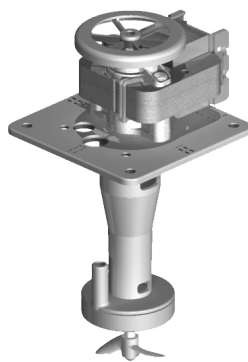
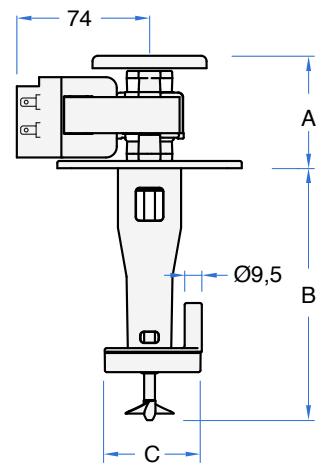
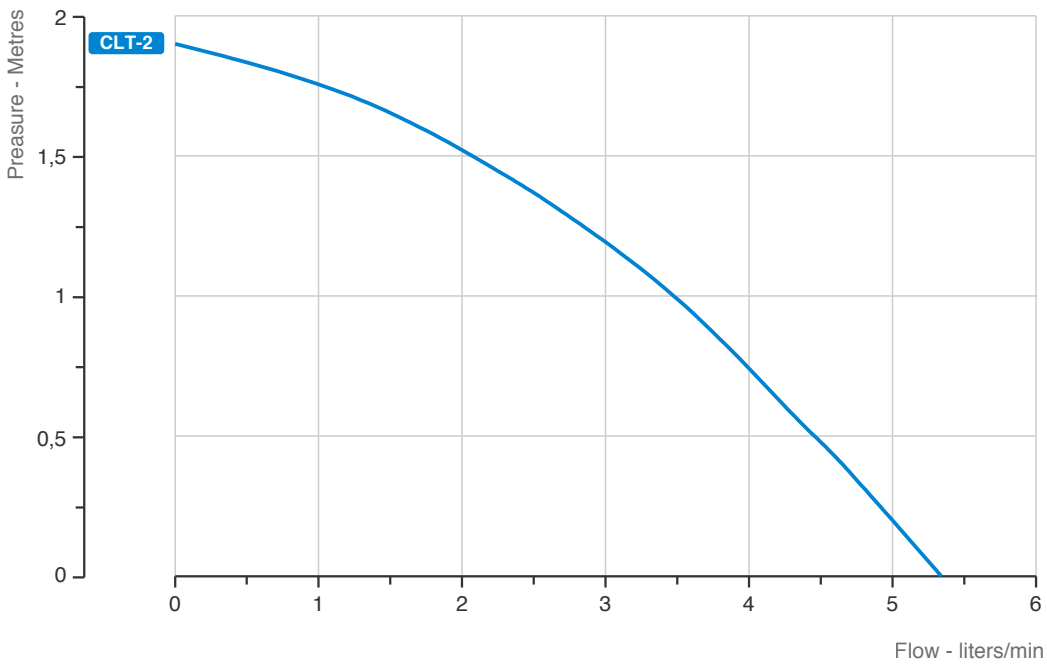
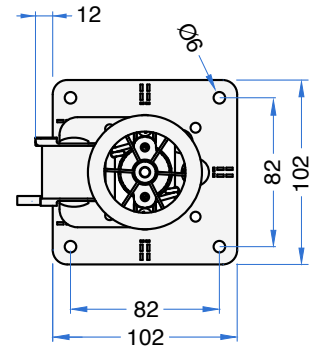
POWER CORDS AVAILABLE

TYPE	CLT	ECO	MID	RIO	ST	ESP	PKS	SP
Feller Plug	No	✓	✓	✓	✓	✓	✓	✓
Bipolar cord	L=100cm	✓	✓	✓	✓	✓	✓	✓
Shuko Plug	No	No	No	✓	✓	✓	✓	No



CLT agitator-pump with its small size, **is an economic pump** that can be installed inside small refrigerators where compact dimensions and low performances are required.

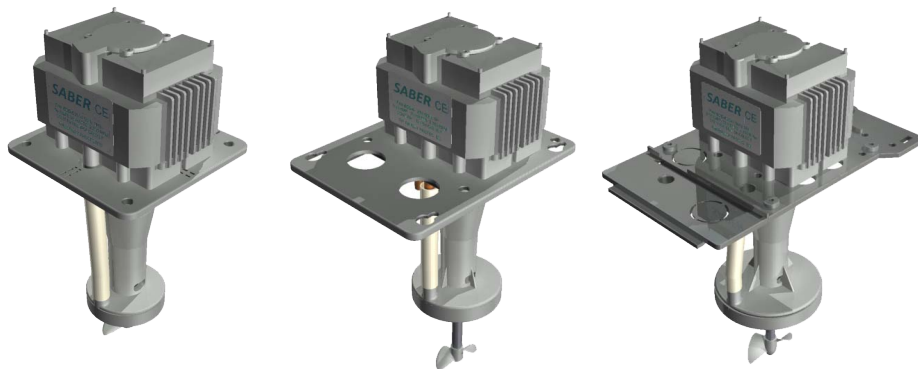
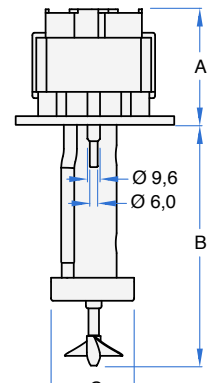
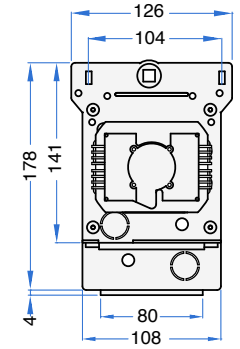
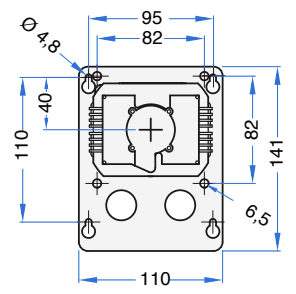
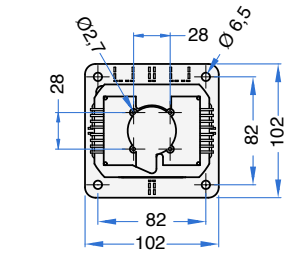
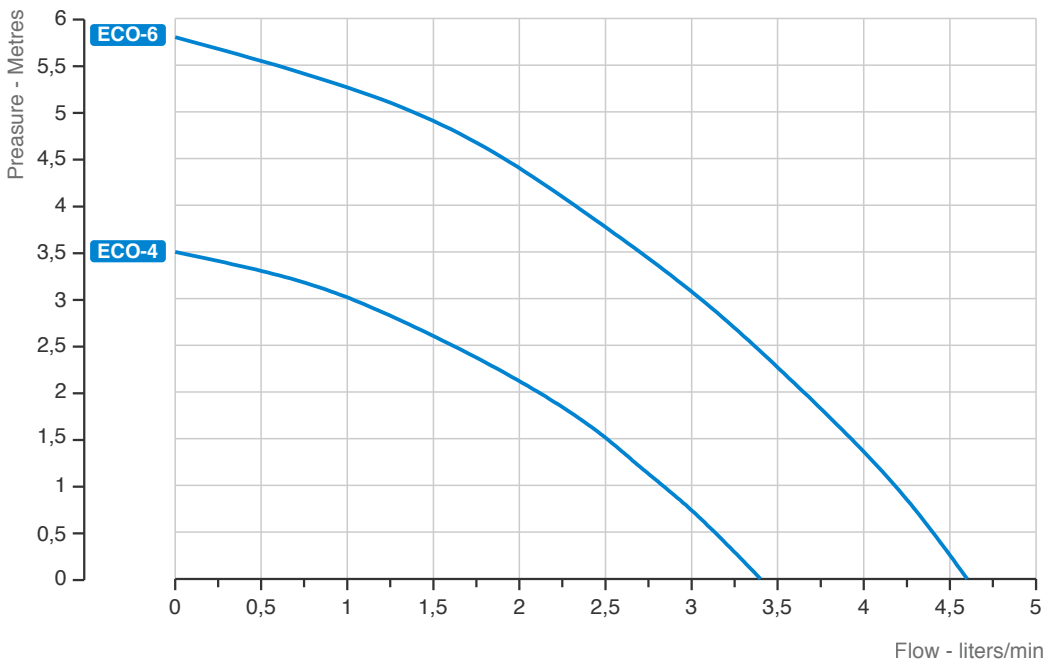
- Pump** AGITATOR-PUMP with immersed vertical axis.
- Windings** Single-phase motor with Class F.
- Motor body** Naked
- Protection** IP XX degree of protection from liquids seepage.
- Safety** Built-in thermal motor protection system.
- Ball bearings** Ø 6mm bearings in a semi-rigid and noise-insulated silicone casing.
- Motor shaft** AISI 303 INOX steel Ø 6mm.
- Fastening parts** INOX steel or anti-oxidant materials.
- Motor parts** ---
- Cooling system** Air cooled pump with a suction speed of 1,2 m/second.
- Water connection** Compatible with John Guest fittings.
- Operation** Power supply 220 & 230 Volts - 24 hours a day non stop.
- Regulations** Complying to EN60335-2-41 and WEEE/RoHs directives.
- Note** Read the instruction booklet for a correct set up and use.



TYPE	Volt	Hz	Amp	Watt (IN)	Rpm	A	B	C	Propeller Ø (mm)	Weight Kg
CLT-2	230	50	0,21	27	2500	64	150	52	45 2 Blades 15°	0,98

ECO agitator-pump series is suitable for medium sized equipment and, thanks to its compact size and full motor protection, can be installed either inside or outside the refrigerator.

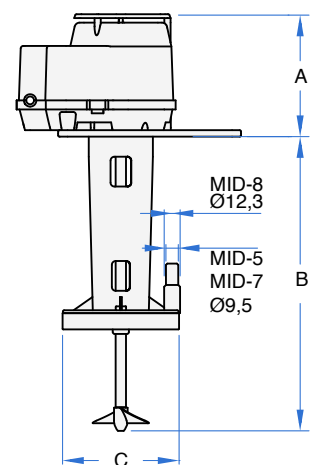
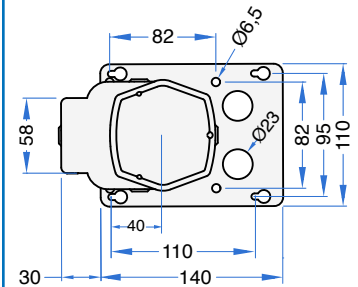
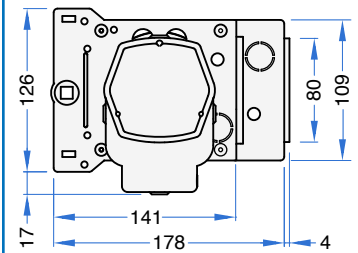
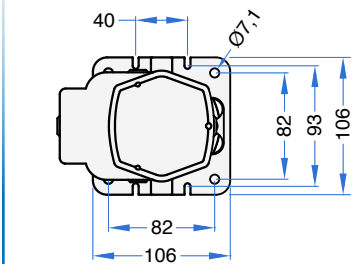
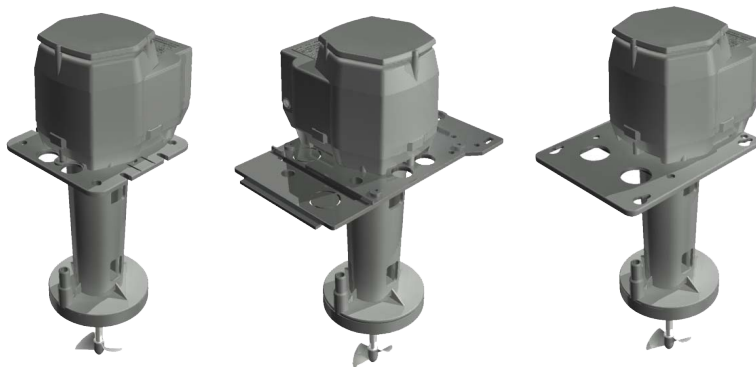
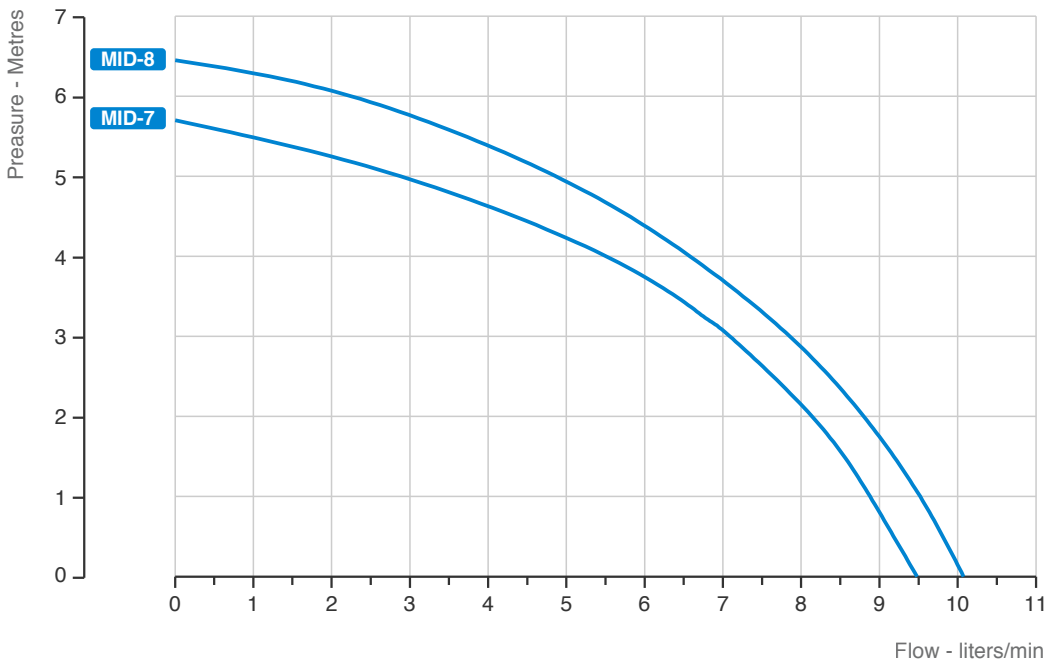
- Pump** AGITATOR-PUMP with immersed vertical axis.
- Windings** Single-phase motor with Class F.
- Motor body** Motor covered by plastic shell in PA66 30% glass fiber.
- Protection** IP 55 degree of protection from liquids seepage.
- Safety** Built-in thermal motor protection system.
- Ball bearings** Ø 8mm NSK or SKF bearings in a semi-rigid and noise-insulated silicone casing.
- Motor shaft** AISI 303 INOX steel Ø 8mm.
- Fastening parts** INOX steel or anti-oxidant materials.
- Motor parts** Thermoplastic motor parts resistant to high temperature.
- Cooling system** Water cooled pump.
- Water connection** Compatible with John Guest fittings.
- Operation** Power supply 220 & 230Volts - 24 hours a day non stop.
- Regulations** Complying to EN60335-2-41 and WEEE/RoHs directives.
- Note** Read the instruction booklet for a correct set up and use.



TYPE	Volt	Hz	Amp	Watt (IN)	Rpm	A	B	C	Propeller Ø (mm)	Weight Kg
ECO-4	230	50	0,29	40	2700	68	185	63	40 2 Blades 15°	1,60
ECO-6	230	50	0,48	69	2750	74	178	78	40 2 Blades 15°	1,79

MID agitator-pump series with its small size, is an **economic pump** that can be installed in small or medium refrigerators where **compact dimensions** are required.

- Pump** AGITATOR-PUMP with immersed vertical axis.
- Windings** Single-phase motor with Class F.
- Motor body** Motor covered by plastic shell in PA66 30% glass fiber
- Protection** IP31 degree of protection from liquids seepage.
- Safety** Built-in thermal motor protection system.
- Ball bearings** Ø 8mm NSK or SKF bearings in a semi-rigid and noise-insulated silicone casing.
- Motor shaft** AISI 303 INOX steel Ø 8mm.
- Fastening parts** INOX steel or anti-oxidant materials.
- Motor parts** Thermoplastic motor parts resistant to high temperature.
- Cooling system** Air cooled pump with a suction speed of 1,6 metre/second.
- Water connection** Compatible with John Guest fittings.
- Operation** Power supply 220 & 230Volts - 24 hours a day non stop.
- Regulations** Complying to EN60335-2-41 and WEEE/RoHs directives.
- Note** PATENTED device. Read the instruction booklet for a correct set up and use.

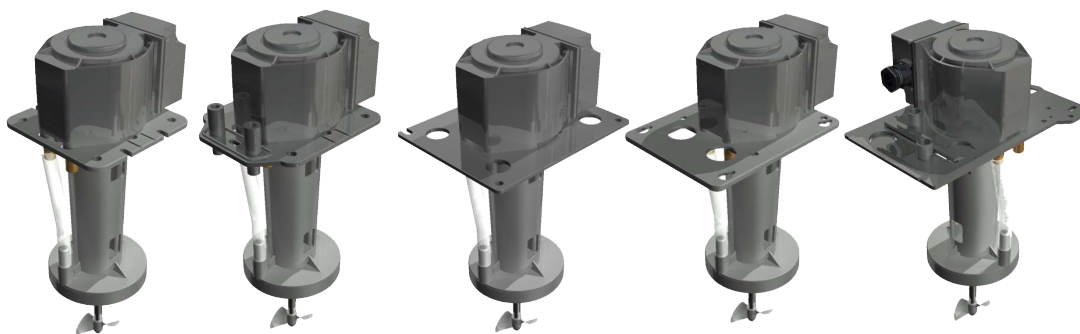
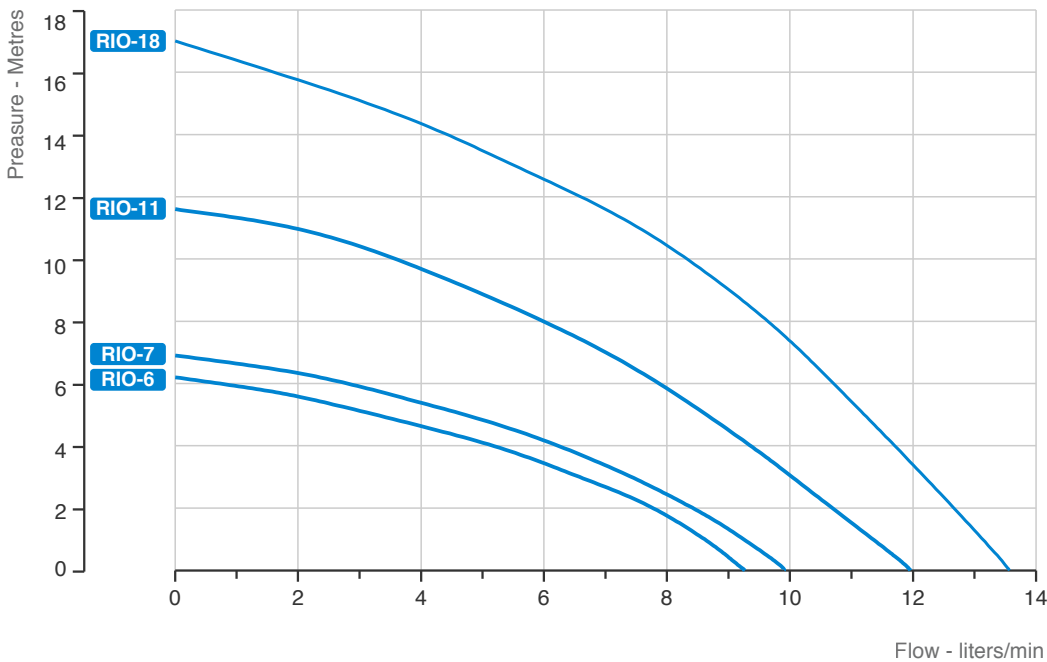
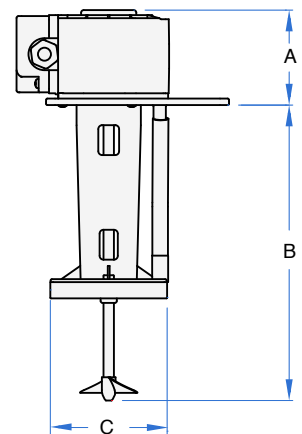
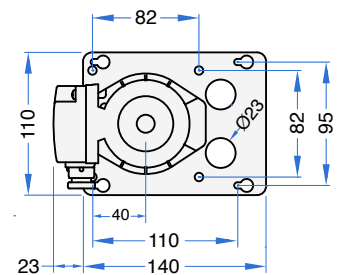
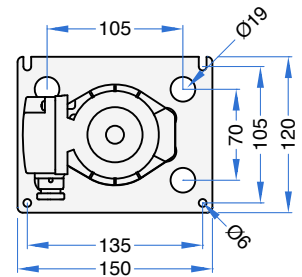
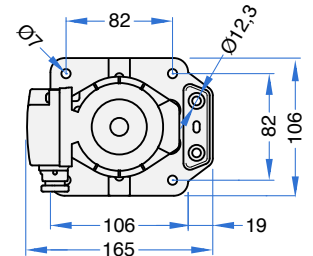
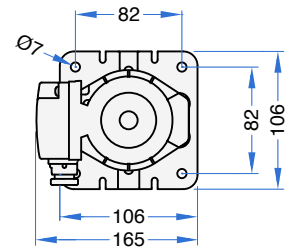


REGISTERED DESIGN

TYPE	Volt	Hz	Amp	Watt (IN)	Rpm	A	B	C	Propeller Ø (mm)	Weight Kg
MID-7	230	50	0,60	64	2750	96	185	78	50 2 Blades x15°	1,80
MID-8	230	50	0,61	68	2700	96	220	90	50 2 Blades x15°	1,90

RIO series represents innovative, highly efficient and reliable pumps, with **extremely compact dimensions and long life expectancy**. These motor-pumps are designed for **internal or external installation**. The complete encapsulation of the motor guarantees the **full protection of the windings from dampness**.

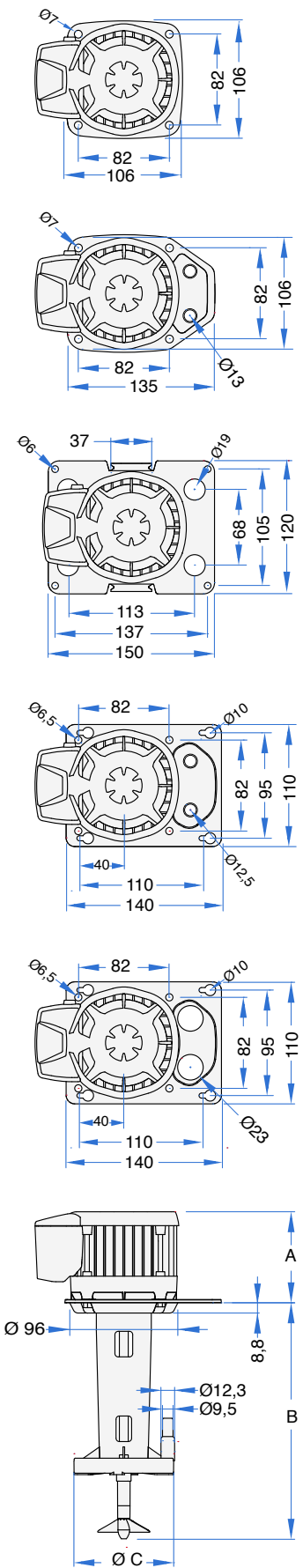
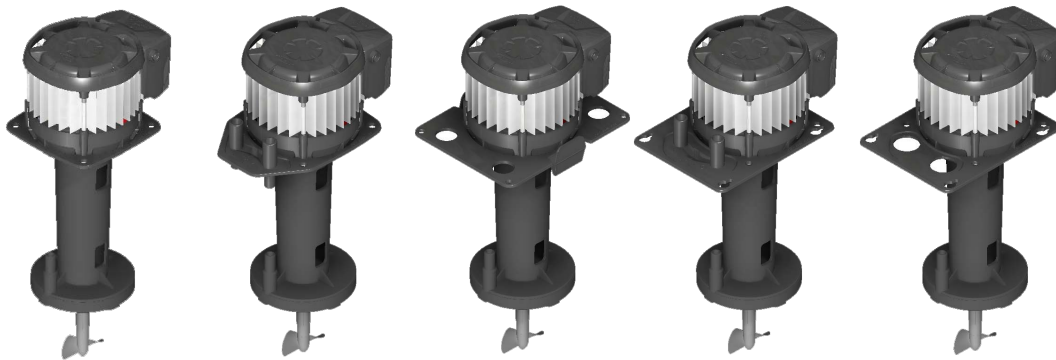
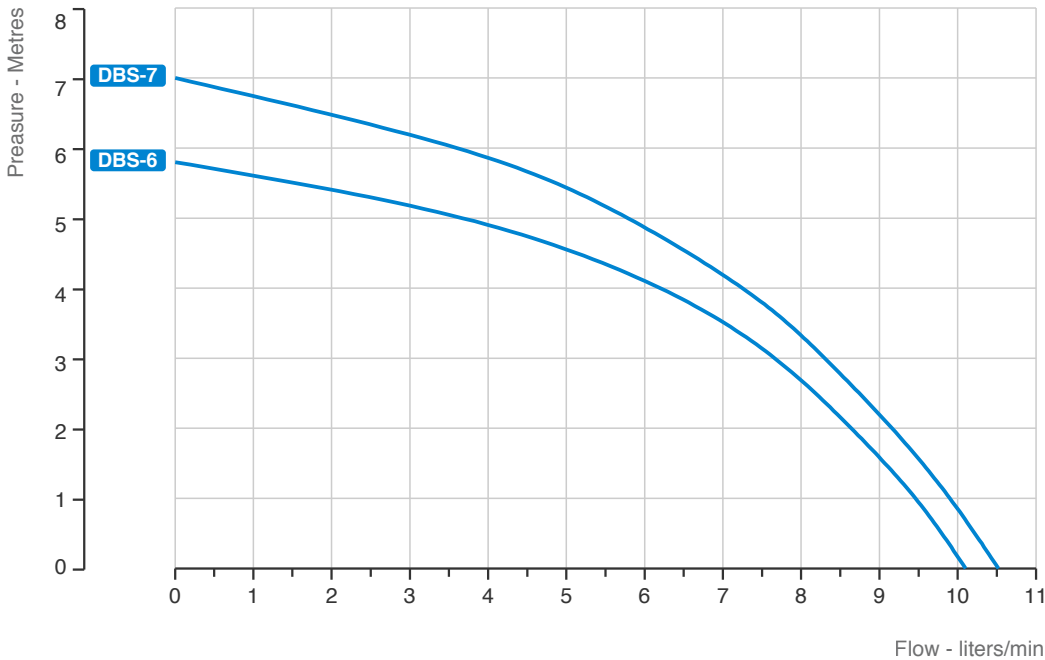
- Pump** AGITATOR-PUMP with immersed vertical axis.
- Windings** Single-phase motor with Class F.
- Motor body** Motor covered by plastic shell in PA66 30% glass fiber.
- Protection** IP 55 degree of protection from liquids seepage.
- Safety** Built-in thermal motor protection system.
- Ball bearings** Ø 8mm NSK or SKF bearings in a semi-rigid and noise-insulated silicone casing.
- Motor shaft** AISI 303 INOX steel Ø 8mm.
- Fastening parts** INOX steel or anti-oxidant materials.
- Motor parts** Thermoplastic motor parts resistant to high temperature.
- Cooling system** Water cooled pump.
- Water connection** Pipe connection Ø 9,5/12,3mm compatible with John Guest fittings.
- Operation** Power supply 220 & 230Volts - 24 hours a day non stop.
- Regulations** Complying to EN60335-2-41 and WEEE/RoHs directives.
- Note** PATENTED device. Read the instruction booklet for a correct set up and use.



TYPE	Volt	Hz	Amp	Watt (IN)	Rpm	A	B	C	Propeller Ø (mm)	Weight Kg
RIO-6	230	50	0,18	45	2800	75	185	78	50 2 Blades x 15°	1,45
RIO-7	230	50	0,20	48	2800	75	220	90	50 2 Blades x 15°	1,50
RIO-11	230	50	0,35	77	2800	85	210	90	50 2 Blades x 15°	1,90
RIO-18	230	50	0,52	104	2800	100	200	90	50 2 Blades x 15°	2,40

DBS Agitator-Pump is designed with a **thermal cutting housing** to protect the ball bearings from dampness. A fan is installed inside in order to cool the motor and to **decrease the lower bearing temperature** which is the part most subject to strain. These measures together with the **energy saving motor**, guarantee a greater life expectancy of the pump

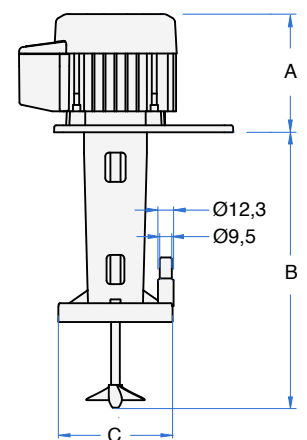
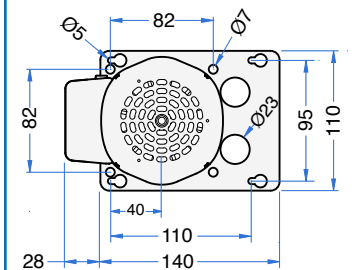
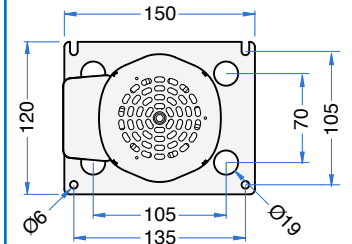
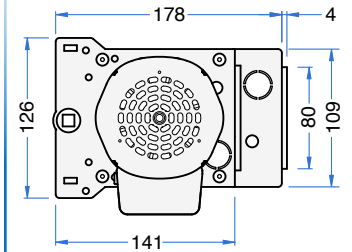
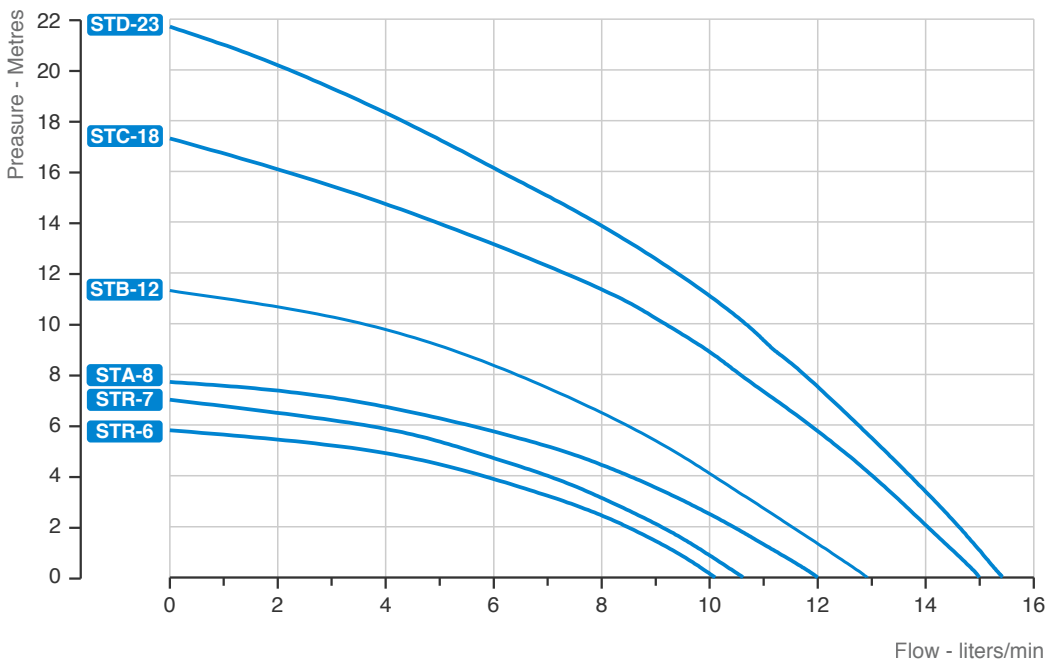
- Pump** AGITATOR-PUMP with immersed vertical axis.
- Windings** Single-phase motor with Class F.
- Motor body** Casing in extruded aluminium.
- Protection** IP54 degree of protection from liquids seepage.
- Safety** Built-in thermal motor protection system.
- Ball bearings** Ø 8mm (or 12mm optional) NSK /SKF bearings in a semi-rigid and noise-insulated silicone casing.
- Motor shaft** AISI 303 INOX steel Ø 8mm.
- Fastening parts** INOX steel or anti-oxidant materials.
- Motor parts** Thermoplastic motor parts resistant to high temperature.
- Cooling system** Air cooled pump with a suction speed of 3,1 meter/second.
- Water connection** Compatible with John Guest fittings.
- Operation** Power supply 220 & 230Volts - 24 hours a day non stop.
- Regulations** Complying to EN60335-2-41 and WEEE/RoHs directives.
- Note** PATENDEED device. Read the instruction booklet for a correct set up and use.



TYPE	Volt	Hz	Amp	Watt (IN)	Rpm	A	B	C	Propeller Ø (mm)	Weight Kg
DBS-6	230	50	0,15	38	2800	82	190	78	50 2 Blades 15°	1,60
DBS-7	230	50	0,16	43	2800	82	190	90	50 2 Blades 15°	1,70

ST agitator-pumps series is designed for medium and big refrigerators where **high reliability** and **long life** are required. These pumps are **very popular in both international and domestic markets** and are appreciated for their performances and **low energy consumption**.

- Type** AGITATOR-PUMP with immersed vertical axis.
- Windings** Single-phase motor with Class F.
- Motor body** Casing in extruded aluminium.
- Protection** IP 54 degree of protection from liquid seepage.
- Safety** Built-in thermal motor protection system.
- Ball bearings** Ø 8mm NSK or SKF bearings in a semi-rigid and noise-insulated silicone casing.
- Motor shaft** AISI 303 INOX steel Ø 8mm.
- Fastening parts** INOX steel or anti-oxidant materials.
- Motor parts** Thermoplastic motor parts resistant to high temperature.
- Cooling system** Air cooled pump with a suction speed of 2,2 m/second.
- Water connection** Compatible with John Guest fittings.
- Operation** Power supply 220 & 230 Volts - 24 hours a day non stop.
- Regulations** Complying with EN60335-2-41 and WEEE/RoHs directives.
- Note** PATENDEED component installed inside. Read manual for correct set up and use.

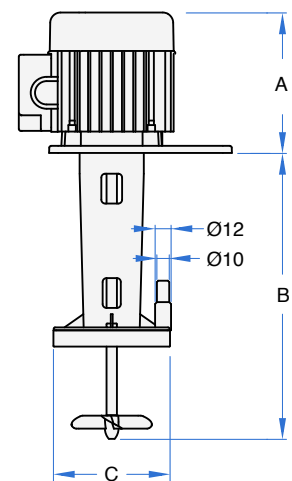
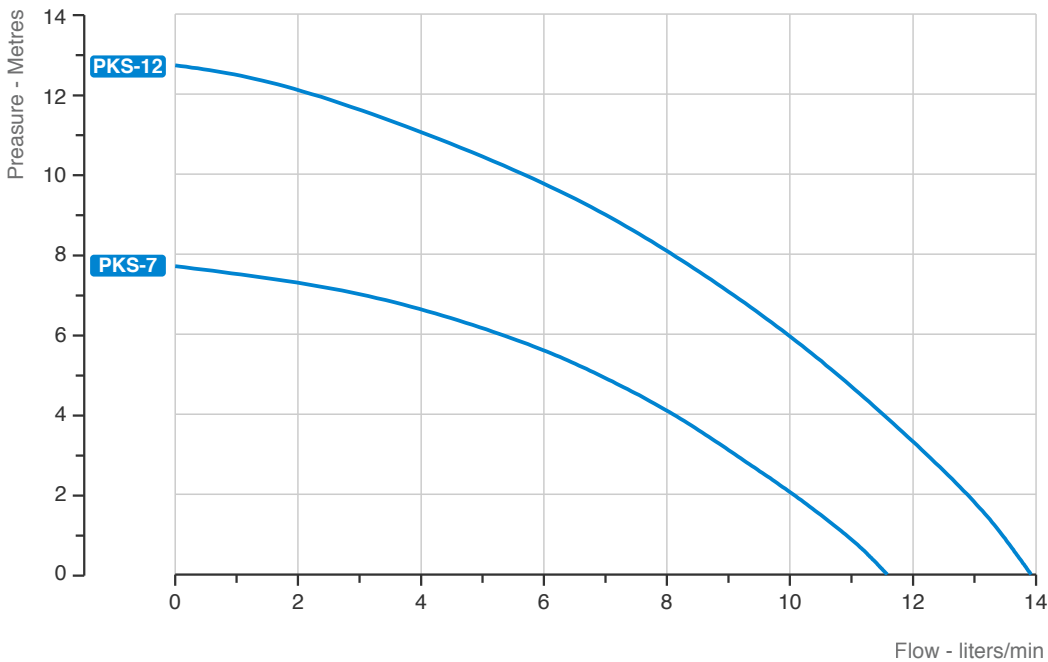
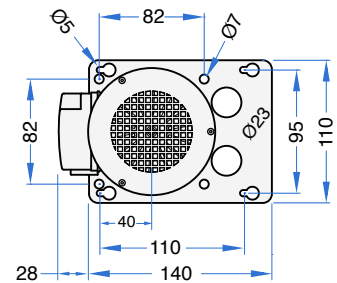
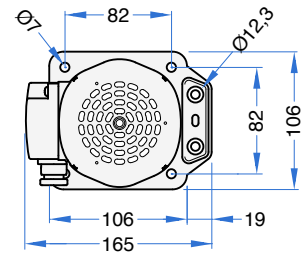


REGISTRAED DESING

TYPE	Volt	Hz	Amp	Watt (IN)	Rpm	A	B	C	Propeller Ø (mm)	Weight Kg
STR-6	230	50	0,18	46	2800	90	185	78	50 2 Blades 15°	1,48
STR-7	230	50	0,19	50	2800	90	220	90	50 2 Blades 15°	1,55
STA-8	230	50	0,25	54	2800	105	220	90	50 2 Blades 15°	1,85
STB-12	230	50	0,36	80	2800	105	220	90	50 2 Blades 15°	2,48
STC-18	230	50	0,46	99	2800	120	240	90	50 2 Blades 15°	2,57
STD-23	230	50	0,51	112	2800	120	240	90	50 2 Blades 15°	2,66

Thanks to its propeller with a diameter of 62 mm with 3 or 4 blades, PKS series is characterized by a **great water agitation**.

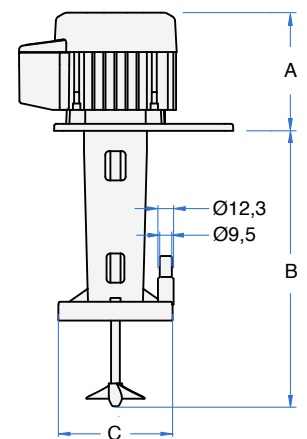
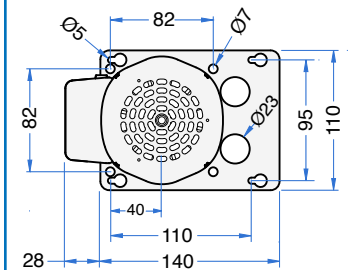
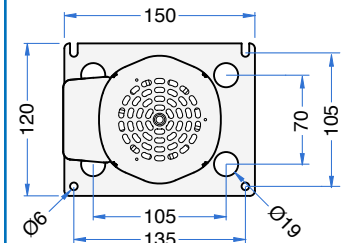
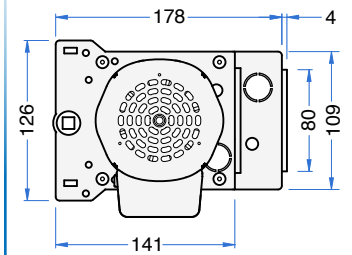
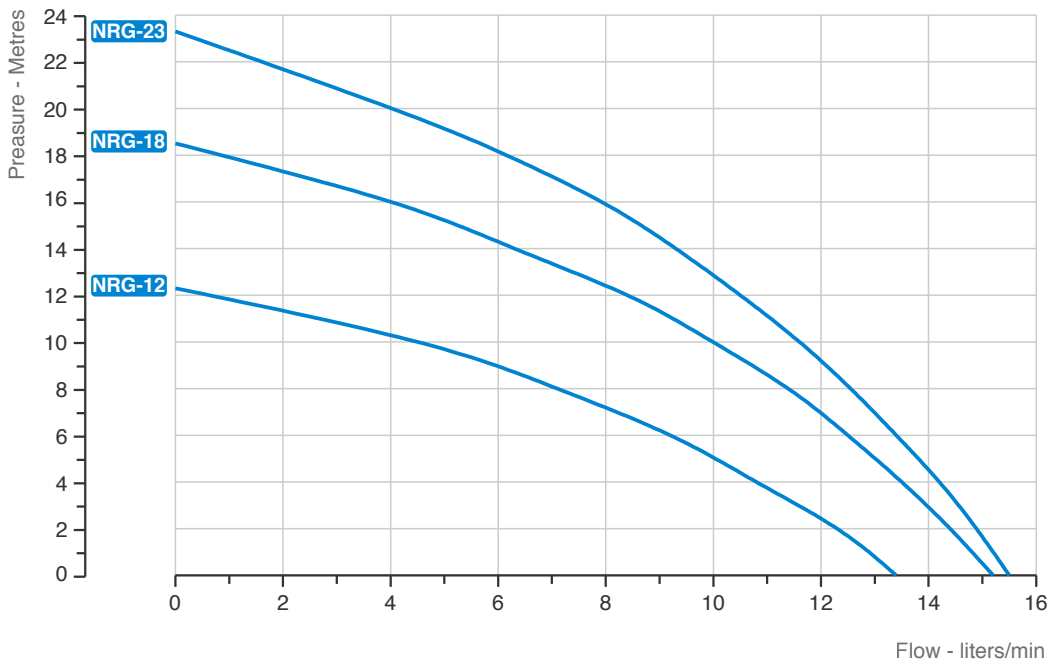
- Pump** AGITATOR-PUMP with immersed vertical axis.
- Windings** Single-phase motor with Class F.
- Motor body** Casing in extruded aluminium.
- Protection** IP 54 degree of protection from liquids seepage.
- Safety** Built-in thermal motor protection system.
- Ball bearings** Ø 8mm NSK or SKF bearings in a semi-rigid and noise-insulated silicone casing.
- Motor shaft** AISI 303 INOX steel Ø 8mm.
- Fastening parts** INOX steel or anti-oxidant materials.
- Motor parts** Thermoplastic motor parts resistant to high temperature.
- Cooling system** Air cooled pump with a suction speed of 1,8 m/second.
- Water connection** Compatible with John Guest fittings.
- Operation** Power supply 220 & 230Volts - 24 hours a day non stop.
- Regulations** Complying to EN60335-2-41 and WEEE/RoHs directives.
- Note** Read the instruction booklet for a correct set up and use.



TYPE	Volt	Hz	Amp	Watt (W)	Rpm	A	B	C	Propeller Ø (mm)	Weight Kg
PKS-7	230	50	0,70	126	2850	120	242	90	62 4 Blades 30°	2,30
PKS-12	230	50	0,74	154	2850	135	228	90	62 4 Blades 30°	2,80

NRG agitator-pumps series is designed for medium and big refrigerators where great agitation is required. Suitable for Glycol/water solutions.

- Pump** AGITATOR-PUMP with immersed vertical axis.
- Windings** Single-phase motor with Class F.
- Motor body** Casing in extruded aluminium.
- Protection** IP 54 degree of protection from liquids seepage.
- Safety** Built-in thermal motor protection system.
- Ball bearings** Ø 8/22mm NSK or SKF bearings in a semi-rigid and noise-insulated silicone casing.
- Motor shaft** AISI 303 INOX steel Ø 8mm.
- Fastening parts** INOX steel or anti-oxidant materials.
- Motor parts** Thermoplastic motor parts resistant to high temperature.
- Cooling system** Air cooled pump with a suction speed of 2,2 m/second.
- Water connection** Compatible with John Guest fittings.
- Operation** Power supply 220 & 230 Volts - 24 hours a day non stop - MAX viscosity 26 CP
- Regulations** Complying to EN60335-2-41 and WEEE/RoHs directives.
- Note** Read the instruction booklet for a correct set up and use.

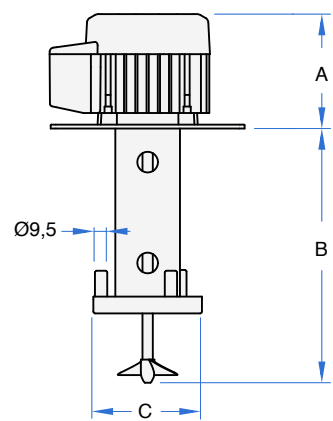
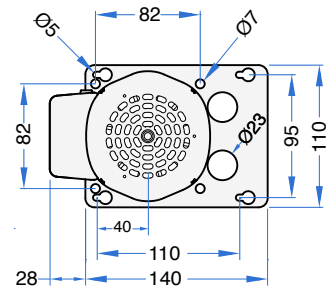
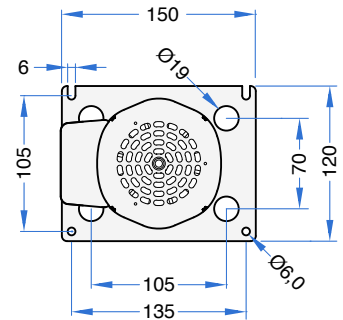
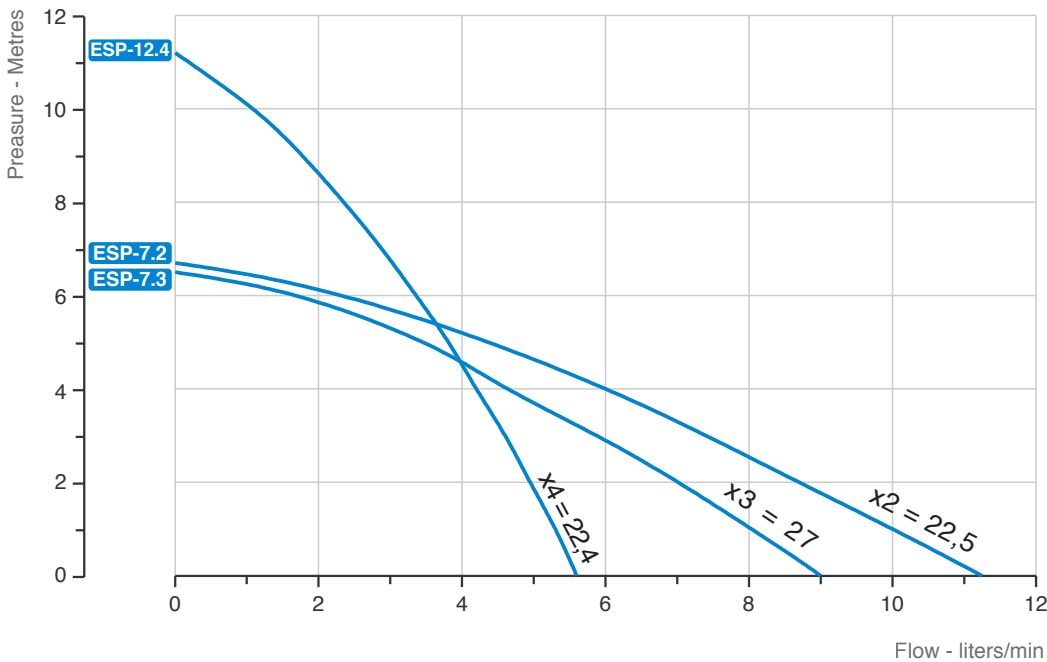


REGISTERED DESIGN

TYPE	Volt	Hz	Amp	Watt (IN)	Rpm	A	B	C	Propeller Ø (mm)	Weight Kg
NRG-12	230	50	0,40	86	2900	122	202	90	50 2 Blades 15°	2,47
NRG-18	230	50	0,44	97	2900	137	225	90	50 2 Blades 15°	2,90
NRG-23	230	50	0,54	120	2850	142	240	90	50 2 Blades 15°	3,10

ESP series offers the possibility to connect **simultaneously 2,3 or 4 cooling circuits** gaining **great energy savings**.

- Pump** AGITATOR-PUMP with immersed vertical axis.
- Windings** Single-phase motor with Class F.
- Motor body** Casing in extruded aluminium.
- Protection** IP 55 degree of protection from liquids seepage.
- Safety** Built-in thermal motor protection system.
- Ball bearings** Ø 8mm NSK or SKF bearings in a semi-rigid and noise-insulated silicone casing.
- Motor shaft** AISI 303 INOX steel Ø 8mm.
- Fastening parts** INOX steel or anti-oxidant materials.
- Motor parts** Thermoplastic motor parts resistant to high temperature.
- Cooling system** Air cooled pump with a suction speed of 2,2 meter/second.
- Water connection** DOUBLE (ESP-7.2) or TRIPLE (ESP-7.3) connection Ø 9,5/12,3mm John Guest fittings.
- Operation** Power supply 220 & 230Volts - 24 hours a day non stop.
- Regulations** Complying to EN60335-2-41 and WEEE/RoHs directives.
- Note** Read the instruction booklet for a correct set up and use.

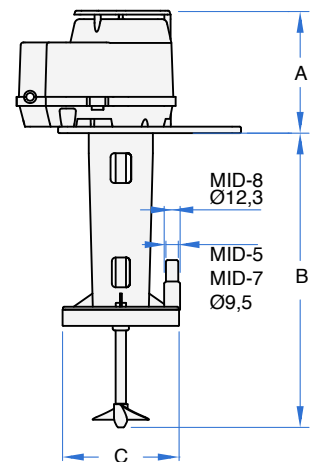
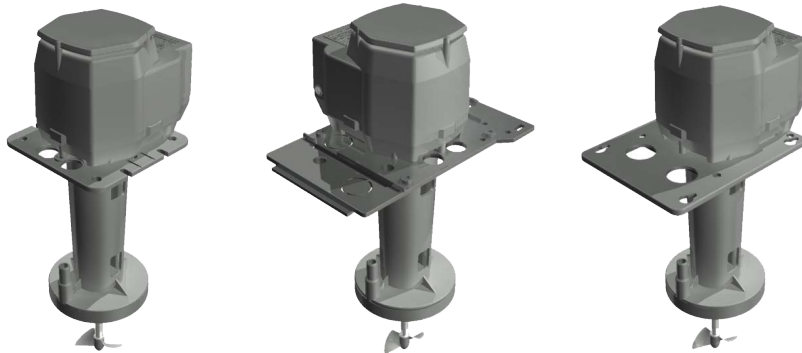
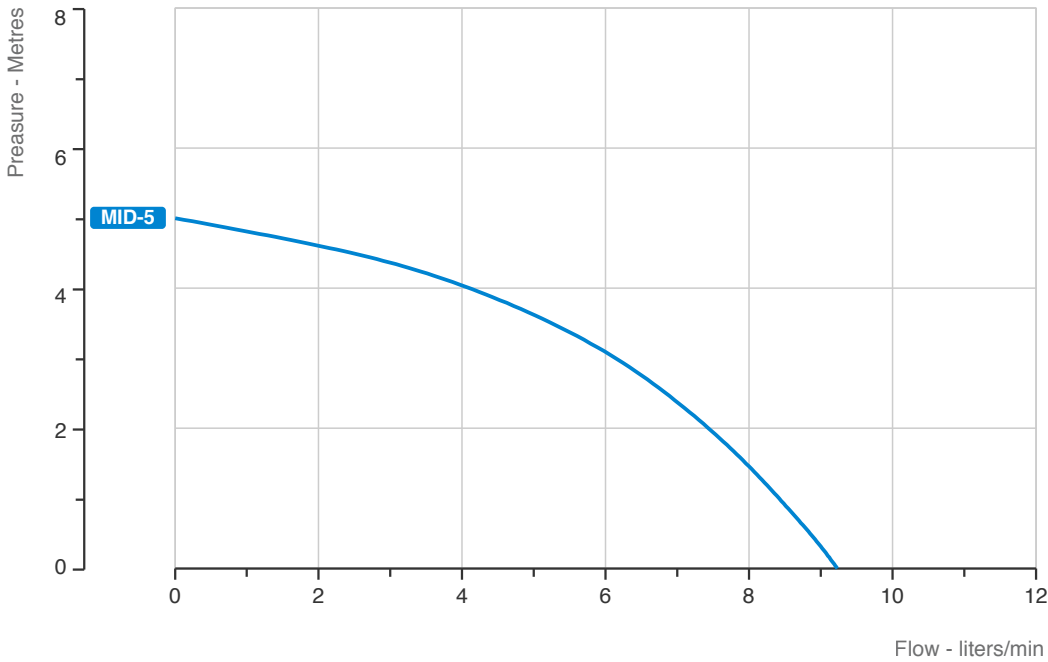
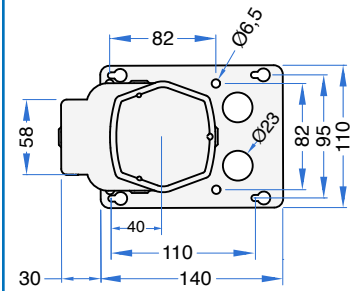
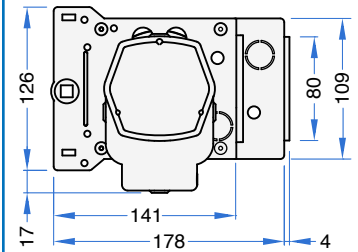
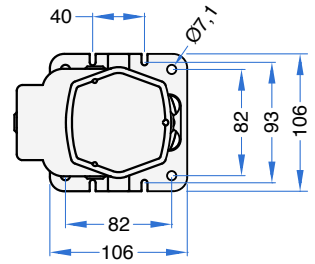


REGISTERED DESIGN

TYPE	Volt	Hz	Amp	Watt (IN)	Rpm	A	B	C	Propeller Ø (mm)	Weight Kg
ESP-7.2	230	50	0,28	60	2890	105	200	90	50 2 Blades 15°	1,84
ESP-7.3	230	50	0,28	61	2890	105	200	90	50 2 Blades 15°	1,84
ESP-12.4	230	50	0,43	95	2700	105	200	90	50 2 Blades 15°	1,95

MID agitator-pump series with its small size, is an **economic pump** that can be installed in small or medium refrigerators where **compact dimensions** are required.

- Pump** AGITATOR-PUMP with immersed vertical axis.
- Windings** Single-phase motor with Class F.
- Motor body** Motor covered by plastic shel in PA66 30% glass fiber
- Protection** IP 31 degree of protection from liquids seepage.
- Safety** Built-in thermal motor protection system.
- Ball bearings** Ø 8mm NSK or SKF bearings in a semi-rigid and noise-insulated silicone casing.
- Motor shaft** AISI 303 INOX steel Ø 8mm.
- Fastening parts** INOX steel or anti-oxidant materials.
- Motor parts** Thermoplastic motor parts resistant to high temperature.
- Cooling system** Air cooled pump with a suction speed of 1,6 meter/second.
- Water connection** Compatible with John Guest fittings.
- Operation** Power supply 110 & 115Volts - 24 hours a day non stop.
- Regulations** Complying to EN60335-2-41 and WEEE/RoHs directives.
- Note** PATENTED device. Read the instruction booklet for a correct set up and use.

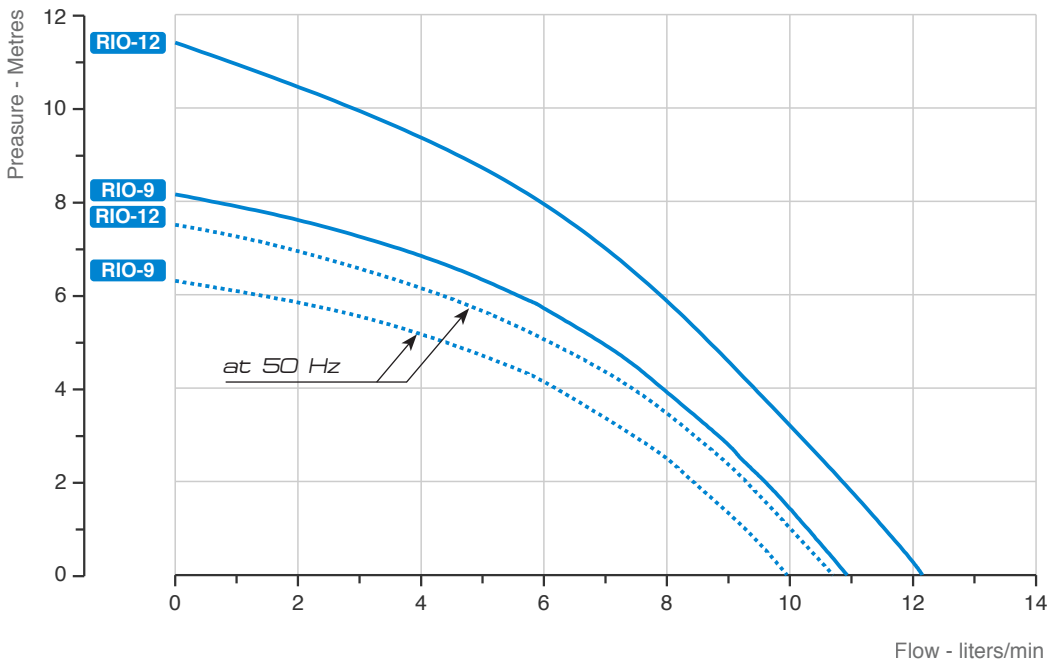
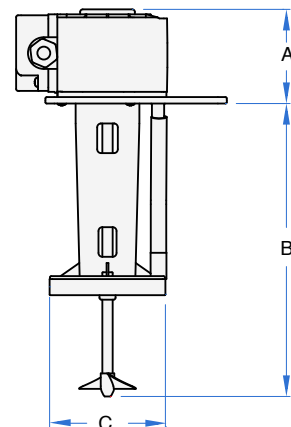
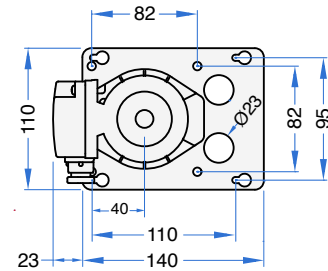
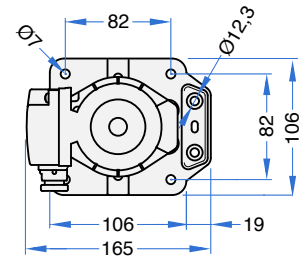
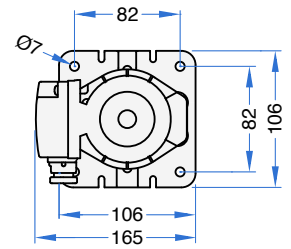


REGISTERED DESIGN

TYPE	Volt	Hz	Amp	Watt (IN)	Rpm	A	B	C	Propeller Ø (mm)	Weight Kg
MID-5	115	60	1,24	66	3400	96	185	64	50 2 Blades x15°	1,75

*RIO series represents innovative, highly efficient and reliable pumps, with **extremely compact** dimensions and long life expectancy. These motor-pumps are designed for **internal or external installation**. The complete motor encapsulation guarantees **full protection** from dampness to the windings.*

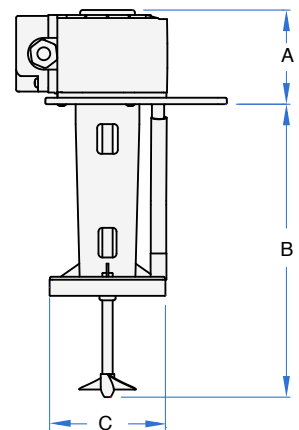
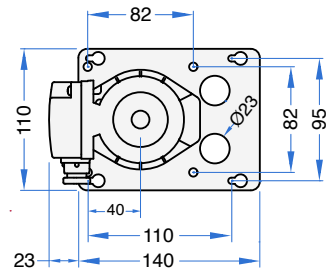
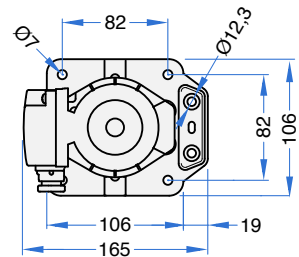
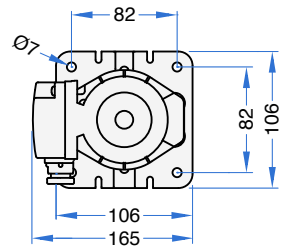
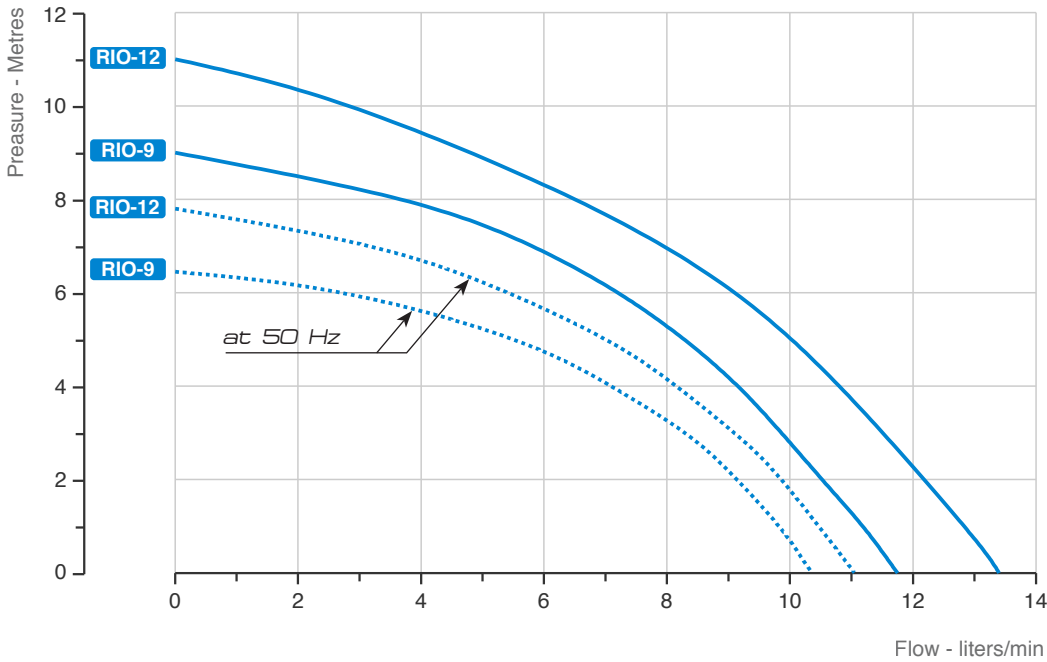
- Pump** AGITATOR-PUMP with immersed vertical axis.
- Windings** Single-phase motor with Class F.
- Motor body** Motor covered by plastic shell in PA66 30% glass fiber.
- Protection** IP 55 degree of protection from liquids seepage.
- Safety** Built-in thermal motor protection system.
- Ball bearings** Ø 8mm NSK or SKF bearings in a semi-rigid and noise-insulated silicone casing.
- Motor shaft** AISI 303 INOX steel Ø 8mm.
- Fastening parts** INOX steel or anti-oxidant materials.
- Motor parts** Thermoplastic motor parts resistant to high temperature.
- Cooling system** Water cooled pump.
- Water connection** Pipe connection Ø 9,5/12,3mm compatible with John Guest fittings.
- Operation** Power supply 110 & 115Volts - 24 hours a day non stop.
- Regulations** Complying to EN60335-2-41 and WEEE/RoHs directives.
- Note** PATENTED device. Read the instruction booklet for a correct set up and use.



TYPE	Volt	Hz	Amp	Watt (IN)	Rpm	A	B	C	Propeller Ø (mm)	Weight Kg
RIO-9	115	50/60	0,60/0,57	56/62	2850/3300	78	185	78	45 2 Blades 15°	1,20
RIO-12	115	50/60	0,82/0,77	73/72	2900/3400	97	230	89	50 2 Blades 15°	1,90

RIO series represents innovative, highly efficient and reliable pumps, with **extremely compact** dimensions and long life expectancy. These motor-pumps are designed for **internal or external installation**. The complete encapsulation of the motor guarantees the **full protection** of the windings from dampness.

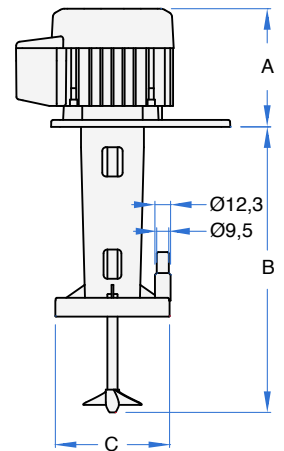
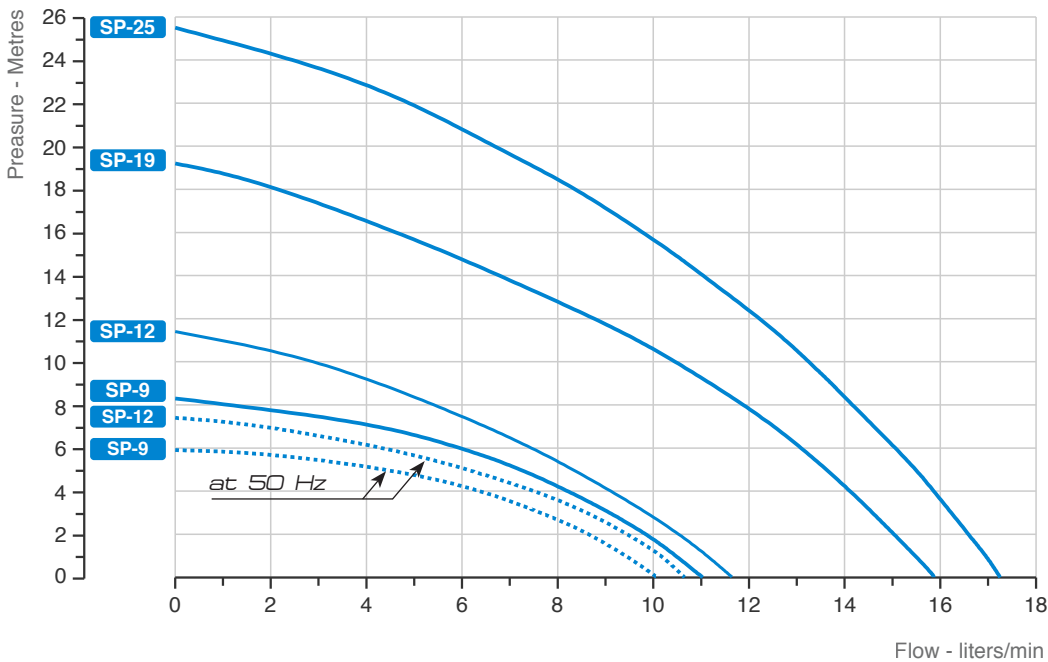
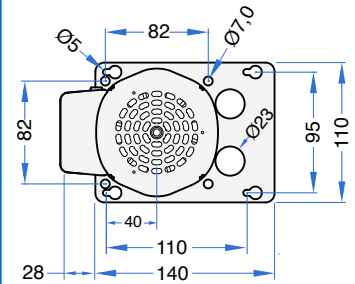
- Pump** AGITATOR-PUMP with immersed vertical axis.
- Windings** Single-phase motor with Class F.
- Motor body** Motor covered by plastic shell in PA66 30% glass fiber.
- Protection** IP 55 degree of protection from liquids seepage.
- Safety** Built-in thermal motor protection system.
- Ball bearings** Ø 8mm NSK or SKF bearings in a semi-rigid and noise-insulated silicone casing.
- Motor shaft** AISI 303 INOX steel Ø 8mm.
- Fastening parts** INOX steel or anti-oxidant materials.
- Motor parts** Thermoplastic motor parts resistant to high temperature.
- Cooling system** Water cooled pump.
- Water connection** Pipe connection Ø 9,5/12,3mm compatible with John Guest fittings.
- Operation** Power supply 220 & 230Volts - 24 hours a day non stop.
- Regulations** Complying to EN60335-2-41 and WEEE/RoHs directives.
- Note** PATENTED device. Read the instruction booklet for a correct set up and use.



TYPE	Volt	Hz	Amp	Watt (IN)	Rpm	A	B	C	Propeller Ø (mm)	Weight Kg
RIO-9	220	50/60	0,31/0,28	63/66	2850/3300	78	230	78	45 2 Blades 15°	1,20
RIO-12	220	50/60	0,37/0,32	67/71	2900/3400	97	230	89	50 2 Blades 15°	2,20

SP agitator-pumps series is designed for medium and big refrigerators where **special voltages and frequency** are required. These pumps are made with **UL approved components**.

- Pump** AGITATOR-PUMP with immersed vertical axis.
- Windings** Single-phase motor with Class F.
- Motor body** Casing in extruded aluminium.
- Protection** IP 54 degree of protection from liquids seepage.
- Safety** Built-in thermal motor protection system.
- Ball bearings** Ø 8mm NSK or SKF bearings in a semi-rigid and noise-insulated silicone casing.
- Motor shaft** AISI 303 INOX steel Ø 8mm.
- Fastening parts** INOX steel or anti-oxidant materials.
- Motor parts** Thermoplastic motor parts resistant to high temperature complying to UL regulation.
- Cooling system** Air cooled pump with a suction speed of 2,2 m/second.
- Water connection** Compatible with John Guest fittings.
- Operation** Power supply 110 & 115Volts - 24 hours a day no stop.
- Regulations** Complying to EN60335-2-41 and WEEE/RoHs directives.
- Note** PATENTED component installed inside. Read instruction manual for correct set up and use.

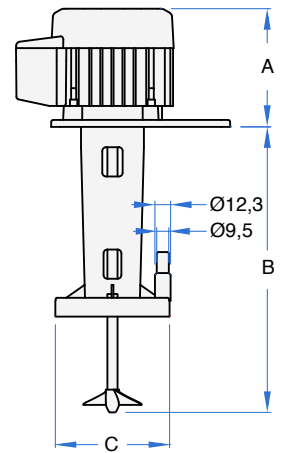
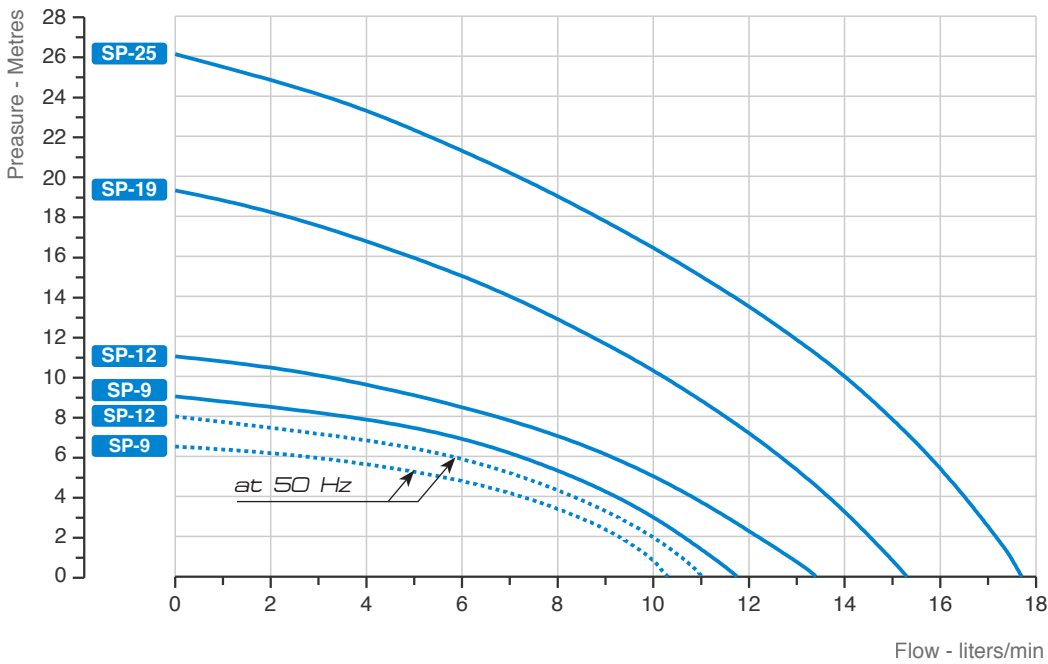
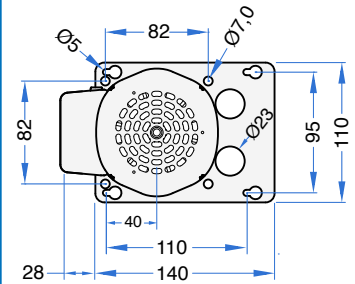


REGISTERED DESIGN

TYPE	Volt	Hz	Amp	Watt (IN)	Rpm	A	B	C	Propeller Ø (mm)	Weight Kg
SP-9	115	50/60	0,60/0,57	56/62	2850/3300	90	185	78	50 2 Blades 15°	1,50
SP-12	115	50/60	0,82/0,77	73/72	2900/3400	105	220	90	50 2 Blades 15°	1,85
SP-19	115	60	1,35	113	3500	120	240	90	50 2 Blades 15°	2,45
SP-25	115	60	1,55	169	3450	140	240	90	50 2 Blades 15°	3,00

SP agitator-pumps series is designed for medium and big refrigerators where **special voltages and frequency** are required. These pumps are made with **UL approved components**.

- Pump** AGITATOR-PUMP with immersed vertical axis.
- Windings** Single-phase motor with Class F.
- Motor body** Casing in extruded aluminium.
- Protection** IP 56 degree of protection from liquids seepage.
- Safety** Built-in thermal motor protection system.
- Ball bearings** Ø 8mm NSK or SKF bearings in a semi-rigid and noise-insulated silicone casing.
- Motor shaft** AISI 303 INOX steel Ø 8mm.
- Fastening parts** INOX steel or anti-oxidant materials.
- Motor parts** Thermoplastic motor parts resistant to high temperature complying to UL regulation.
- Cooling system** Air cooled pump with a suction speed of 2,2 m/second.
- Water connection** Compatible with John Guest fittings.
- Operation** Power supply 220 & 230Volts - 24 hours a day no stop.
- Regulations** Complying to EN60335-2-41 and WEEE/RoHs directives.
- Note** PATENTED component installed inside. Read instruction manual for correct set up and use.



REGISTERED DESIGN

TYPE	Volt	Hz	Amp	Watt (IN)	Rpm	A	B	C	Propeller Ø (mm)	Weight Kg
SP-9	220	50/60	0,31/0,28	63/66	2800/3300	90	185	78	50 2 Blades 15°	1,50
SP-12	220	50/60	0,37/0,32	67/71	2900/3450	105	220	90	50 2 Blades 15°	1,80
SP-19	220	60	0,49	107	3450	120	240	90	50 2 Blades 15°	2,40
SP-25	220	60	0,73	155	3450	140	240	90	50 2 Blades 15°	3,00